



P49MHz Pixel Clock Camera Link B/W camera

# VCC-G22

Series

**VCC-G22U21CL**

1/1.8" CCD 20fps

**UXGA**

**VCC-G22V31CL**

1/3" CCD 120fps

**VGA**

**VCC-G22S21CL**

1/2" CCD 25fps

**SXGA**



G22 Series high speed black and white camera

Only 29mm<sup>3</sup> in size and with a 49MHz pixel clock, its small size, light weight and speed makes it a best match for use in embedded systems.

Product variations    G22U21CL: 2M pixel/20fps    G22S21CL : 1.45M pixel/25fps  
G22V31CL: 330K pixel/120fps (max.360fps in partial scan mode)

## Features

29mm Cubic Size

High Resolution

High Framerate

C Mount

Mini Camera Link Connector

External Trigger Shutter

Partial Scan Function( G22V31CL )



49MHz Pixel Clock Camera Link B/W Camera

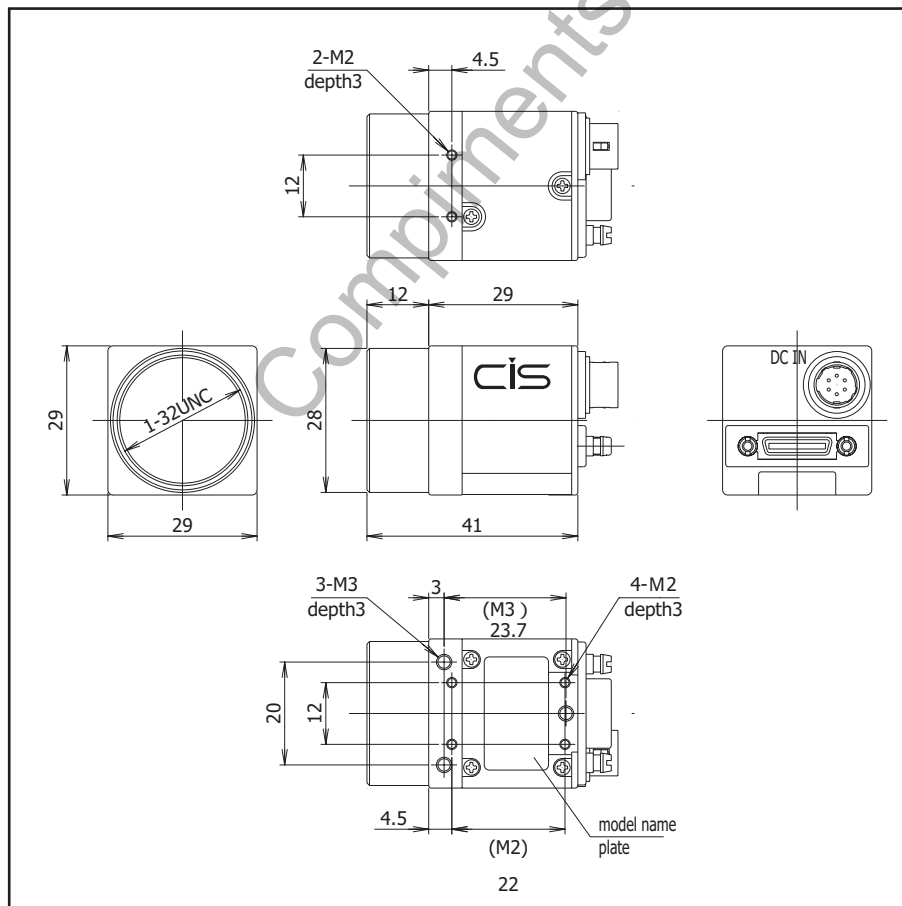
# VCC-G22 Series



## Feature Overview

	VCC-G22U21CL	VCC-G22S21CL	VCC-G22V31CL
Resolution	UXGA	SXGA	VGA
Sensor Type	1/1.8"CCD	1/2"CCD	1/3"CCD
Power Consumption	2.7W		2.5W
Input Voltage	DC+12V ± 10%(Max. voltage not to exceed 15V)		
Operating Conditions	Temperature 0 ~ +40 Humidity 20 ~ 80%		
Weight	Approx.50g		
Lens Mount	C Mount		
Optical Axis Accuracy	Less than (Pixel Center) ± 0.1mm		
Video Output Signal	Digital 8bit / 10bit(switchable)		
Effective Number of Pixels	1628(H) × 1236(V)	1392(H) × 1040(V)	659(H) × 494(V)
Horizontal Scan Frequency	25.568KHz	27.425KHz	62.936KHz
Pixel Clock	49.090MHz		
Pixel Size	4.4 × 4.4( μ m)	4.65 × 4.65( μ m)	7.4 × 7.4( μ m)
Minimum Illumination	F1.4 1.0lx	F1.4 2.0lx	F1.4 2.5lx
Sensitivity	F5.6 400lx	F5.6 400lx	F4 400lx
Standard Color Temperature	3200 ° K		
Gain Switching	0dB +6dB MANUAL(min-1dB ~ max+12dB)		
Electronic Shutter	OFF ~ 1/18000sec.	OFF ~ 1/20000sec.	OFF ~ 1/40000sec.
External Trigger	Fixed Shutter Exposure/Pulse Width Exposure		
Partial Scan			1/2, 1/4, 1/6 SCAN
Gamma Compensation	Default OFF		
Control Interface	Camera Link / RS232C		
Dimensions	29mm × 29mm × 29mm( excluding projection )		

## Dimensions



## Important Notice

Information contained herein is subject to change without prior notice.

## Manufacturer

### CIS Corporation

539-5, Higashiasakawa-machi, Hachioji-shi,  
Tokyo, 193-0834 Japan  
TEL. +81-426-64-5535 FAX. +81-426-69-7471  
<http://www.ciscorp.co.jp>

## Authorized Distributor

For further information on the product, please contact your authorized distributor.