

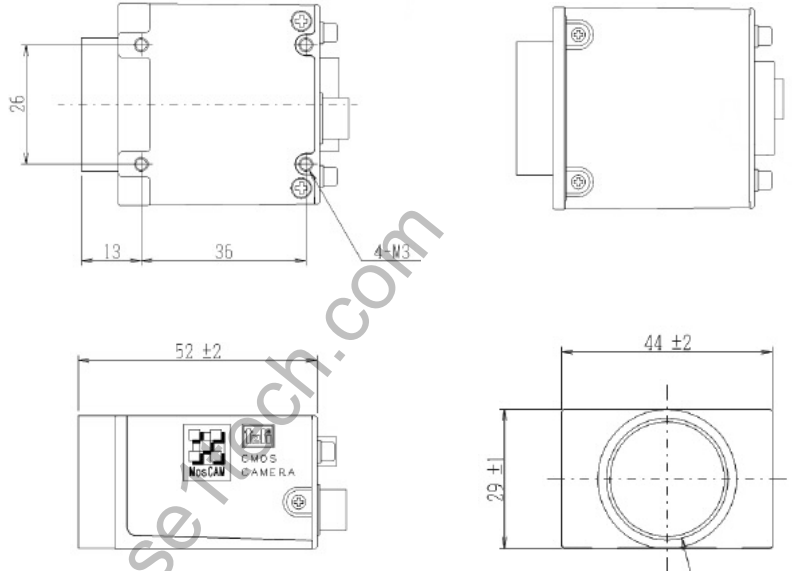


## SPECIFICATIONS

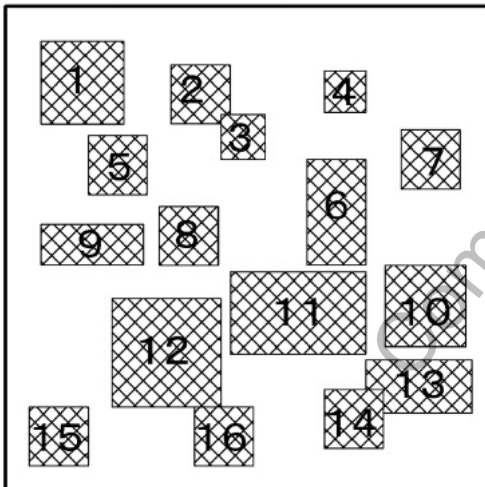
Image Sensor	2/3 Type CMOS Sensor
Scanning System	Progressive Scan
Total Pixels	1280(H) x 1024(V)
Active Pixels	1240(H) x 1024(V)
Pixel Size	6.7(H) x 6.7(V) micron m
Frame Rate	22 FPS
Sync System	Internal Synch
Aspect Ratio	5:4
Subject Illumination	2600 lux@F5.6, 3100K
Interface	CameraLink (LVDS, 10bit, Pixel Clock 33.3333MHz)
Baud Rate	9600, 19200, 38400
Video Mode	Format 7/Special Format (in WOI) Mono 8bit
Signal-to-Noise Ratio	47dB (p-p)/rms
Input Signal	TRIG (Shutter Trigger) 3.3V CMOS level
Grabbing Timing	Falling edge detection
Pulse Width	Minimum: 1 micro sec, Max: no limit
Electronic Shutter	1 to 4000 Shutter Speed (preset)
Shutter Mode	Global Shutter
Random Trigger	RTS available by external trigger input.
Mode 0	Shutter speed preset mode
Mode 1	Shutter speed controlled via shutter trigger pulse width
Power Supply	DC12V ±10%
Power Consumption	1.4W
Lens Mount	C-Mount
Flange Back	17.526 mm
Dimensions	44mm(W) x 29mm(H) x 52mm(D)
Weight	120g
Operating Conditions	-5 to 45°C, 20 to 80% Humidity

## Typical Applications

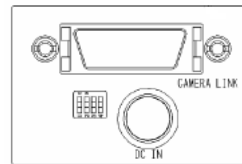
Video image capture applications for the CSB1100CL-10 include high-speed machine vision, inspection, high contrast image, quality control, factory automation, microscopy and many others.



## WINDOWS OF INTEREST (WOI)



Up to 16 Windows of Interest (WOI) can be set by the user in one screen, resulting in increased frame rate suitable for high-speed image processing. Only arbitrary area can be read out by the designation of horizontal and vertical address.



## DIP Switch

(1)	(2)	BAUD RATE
OFF	OFF	9600
ON	OFF	19200
OFF	ON	38400
(3)	(4)	MEMORY
OFF	OFF	1
ON	OFF	2
OFF	ON	3
ON	ON	4

## DC IN

Connector (Camera): HR10A-7R-6PB\*

Plug (Cable): HR10A-7P-6S\*

Pin Number	Signal Name
1	N.C.
2	N.C.
3	GND
4	N.C.
5	N.C.
6	+12V

\*manufactured by Hirose Denki

## Data In/Out Connection

Camera Side: 3M 10226-2210VE

Cable Side: 3M 10126-6000

Pin Number	I/O	Signal Name
1	-	GND
2	OUT	TxOUT0-
3	OUT	TxOUT1-
4	OUT	TxOUT2-
5	OUT	Tx CLK OUT-
6	OUT	Tx OUT3-
7	IN	Ser TC (Rx D) +
8	OUT	Ser TFG (Tx D) -
9	IN	Trig-
10	IN	EXT AFR+
11	IN	EXT SP-
12	IN	EXT VR+
13	-	GND
14	-	GND
15	OUT	Tx OUT0+
16	OUT	Tx OUT1+
17	OUT	Tx OUT2+
18	OUT	Tx CLK OUT+
19	OUT	Tx OUT3+
20	IN	Ser TC (Rx D)-
21	OUT	Ser TFG (Tx D)+
22	IN	Trig+
23	IN	EXT AFR-
24	IN	EXT SP+
25	IN	EXT VR1
26	-	GND



## TOSHIBA TELI CORPORATION

7-1, 4-chome Asahigaoka  
Hino-shi, Toyko 191-0065 Japan  
TEL: +81-042-589-8771  
FAX: +81-042-589-8774  
www.toshiba-teli.co.jp

## TOSHIBA TELI AMERICA, INC.

33 Hammond, Suite 211  
Irvine, California 92618 USA  
TEL: +1-949-770-TELI(8354)  
FAX: +1-949-206-0210  
www.toshiba-teli.com